

Connexoon Window RTS and Amazon Alexa

easy set up



Works with
IFTTT



Contents

Connect to IFTTT	3
Connect to Amazon Alexa device	5
Activate Amazon Alexa voice control Applet	6
Create a new Applet	7

Connect to IFTTT

IFTTT

Prior to IFTTT use...

- Ensure Amazon Alexa has been programmed and is operational.
- Ensure the Connexoon Window RTS device has scenes or ambiances programmed.

Note: Each Connexoon Window RTS user can have a maximum of 8 scenarios (4 modes and 4 ambiances)

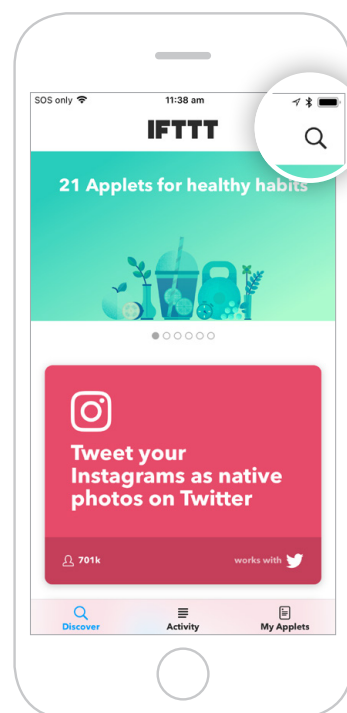
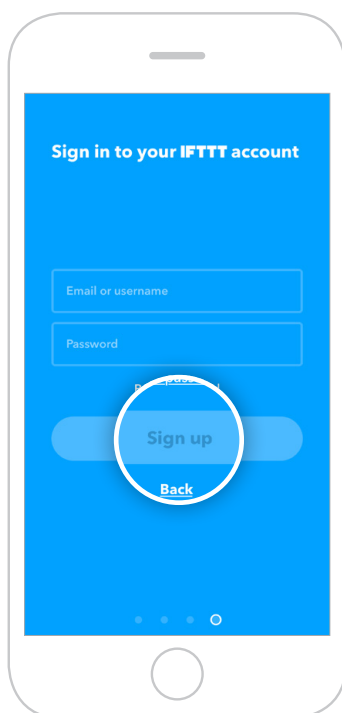
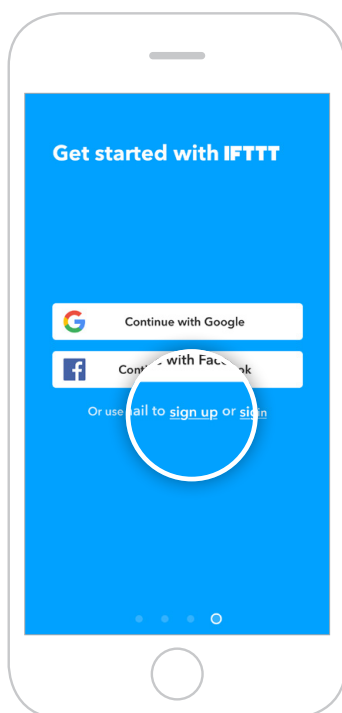


1 Download the IFTTT app or access the IFTTT website <https://ifttt.com>

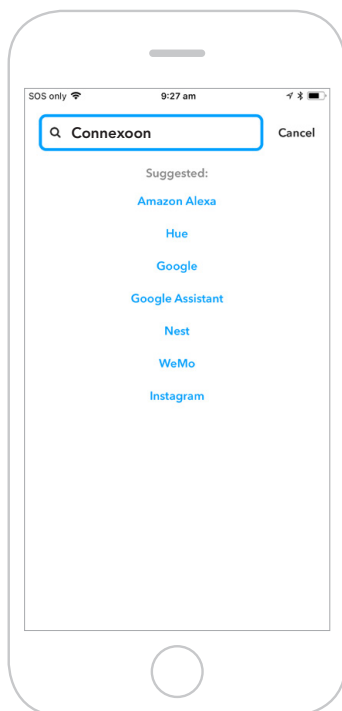
2 Open the IFTTT app and select **Sign up.**

3 Enter your email address, password and select **Sign up.**

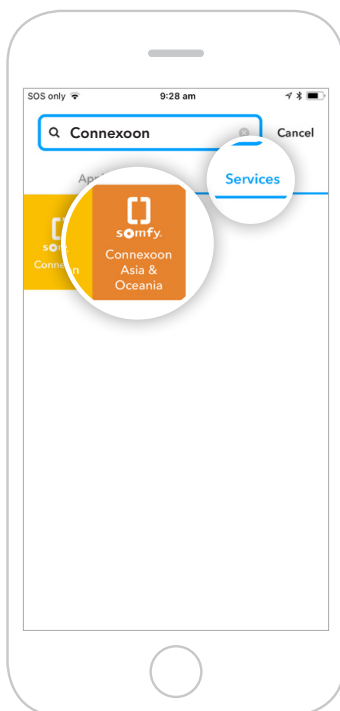
4 Select the **lookup icon in the top right to add your Connexoon Window RTS to the IFTTT account.**



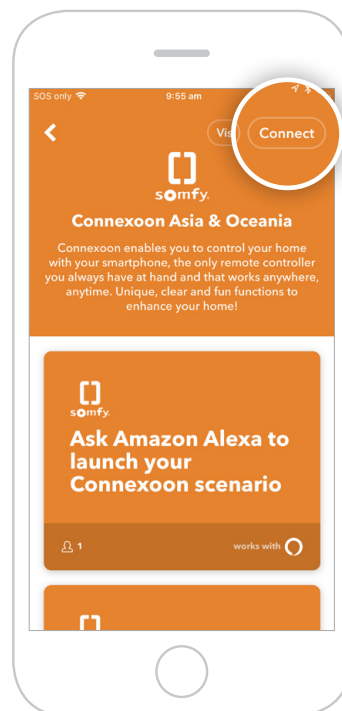
- 5 Type “**Connexoon**” in the search bar and click on **Search**.



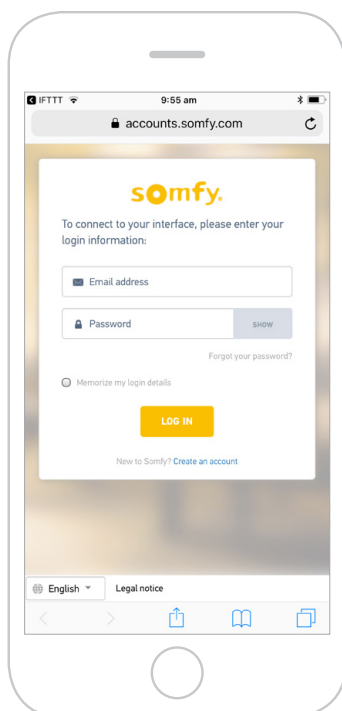
- 6 Ensure the **Services** tab has been selected in the search results. Select **Connexoon Asia & Oceania**.



- 7 Select **Connect**.

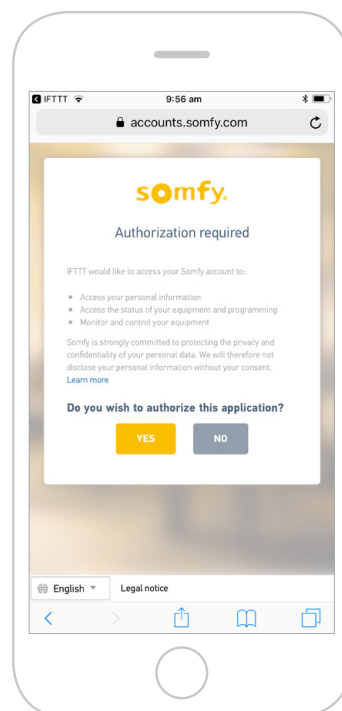


- 8 Enter the email address and password used for your **Connexoon Window RTS login**.



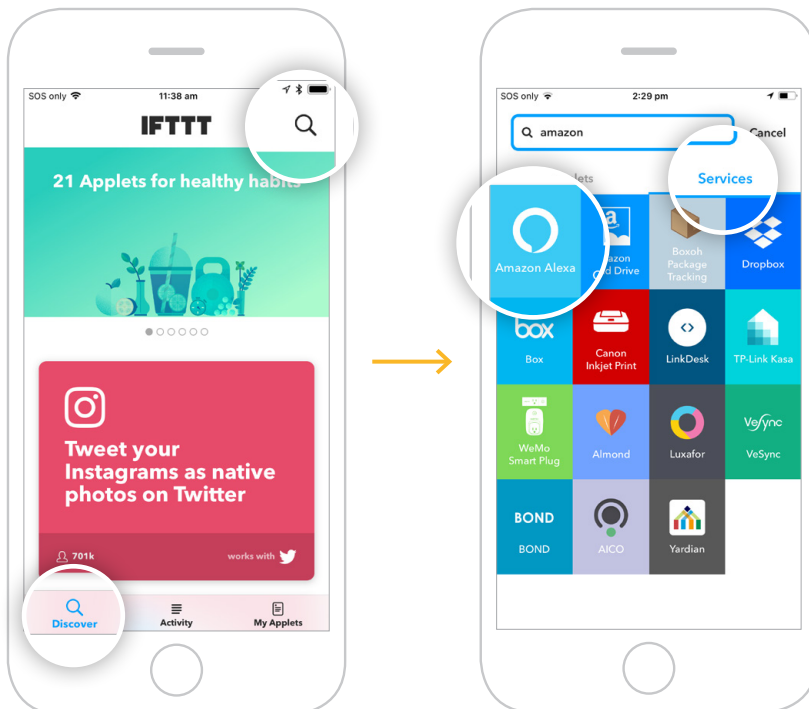
- 9 **Authorise** IFTTT compatibility with your Connexoon Window RTS. “Open in IFTTT?” pop-up appears. Select **Open** to proceed.

To return to main screen, click the back arrow in the top-left corner and clear the Search field.

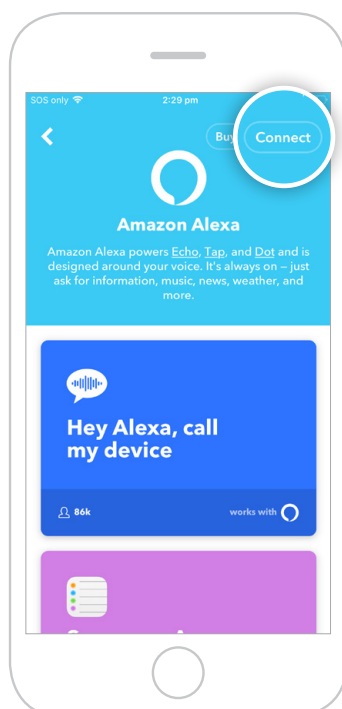


Connect to Amazon Alexa device

- 10** On the **Discover** tab, type in “Amazon” and click on **Search**. Select **Amazon Alexa**. Ensure the **Services** tab has been selected.



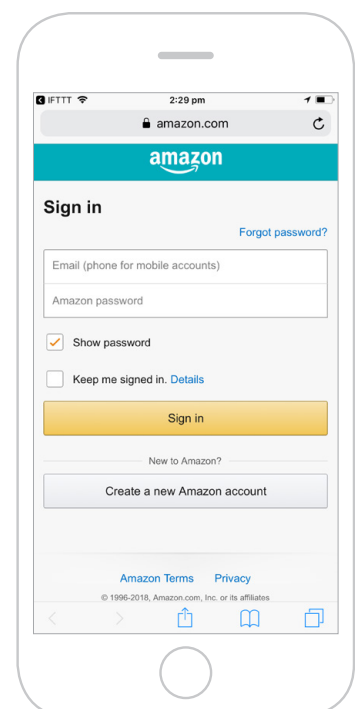
- 11** Select **Connect**.



- 12** Sign in with your **Amazon Alexa sign in**.

“Open in IFTTT?” pop-up appears. Select **Open** to proceed.

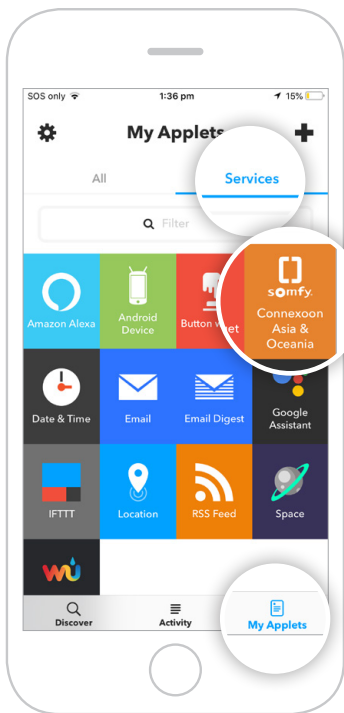
To return to main screen, click the back arrow in the top-left corner and clear the Search field.



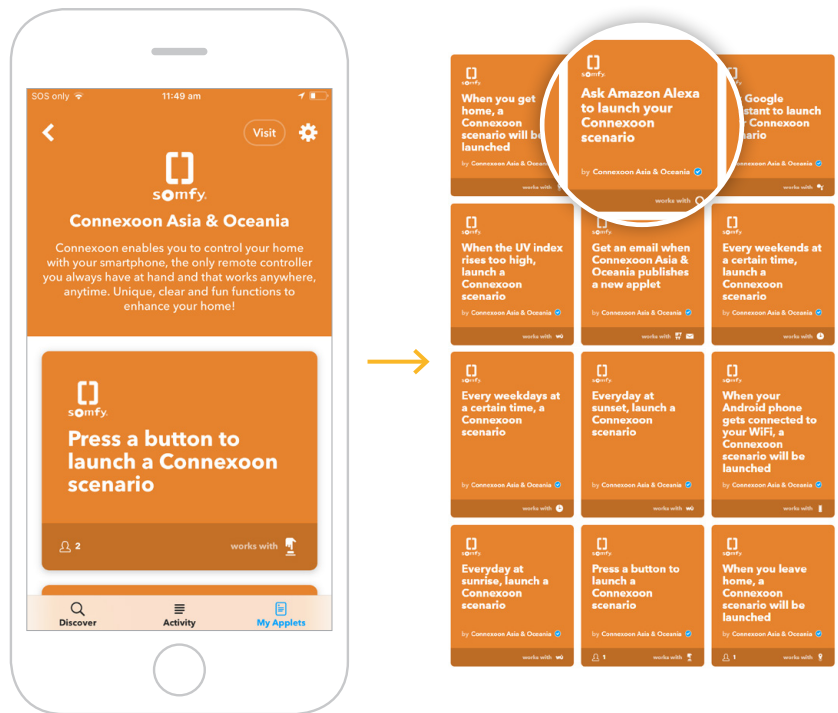
Activate Amazon Alexa voice control Applet

- Follow the next steps to **activate existing Applets** created by Connexoon Asia & Oceania.
- To **create a new Applet**, move to step 16.

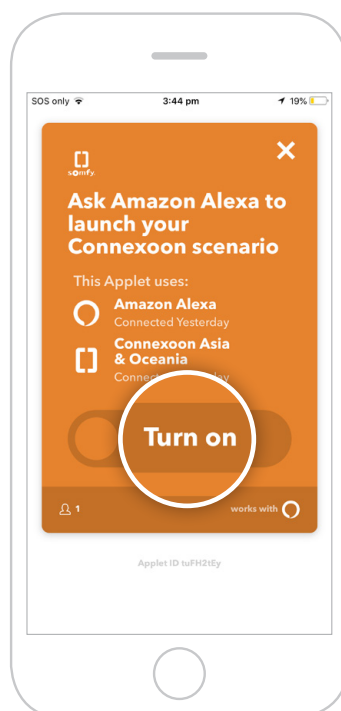
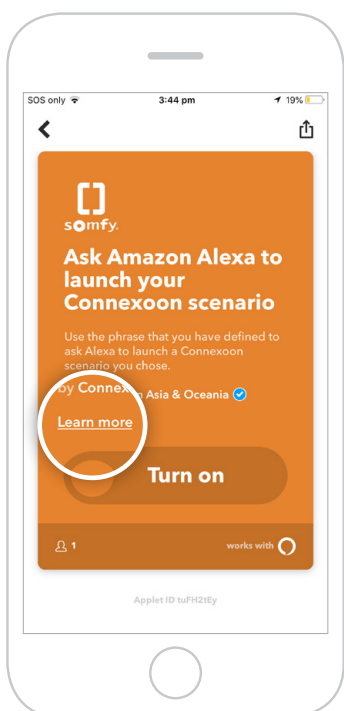
13 Under **Services** on the **My Applets** tab, select **Connexoon Asia & Oceania**.



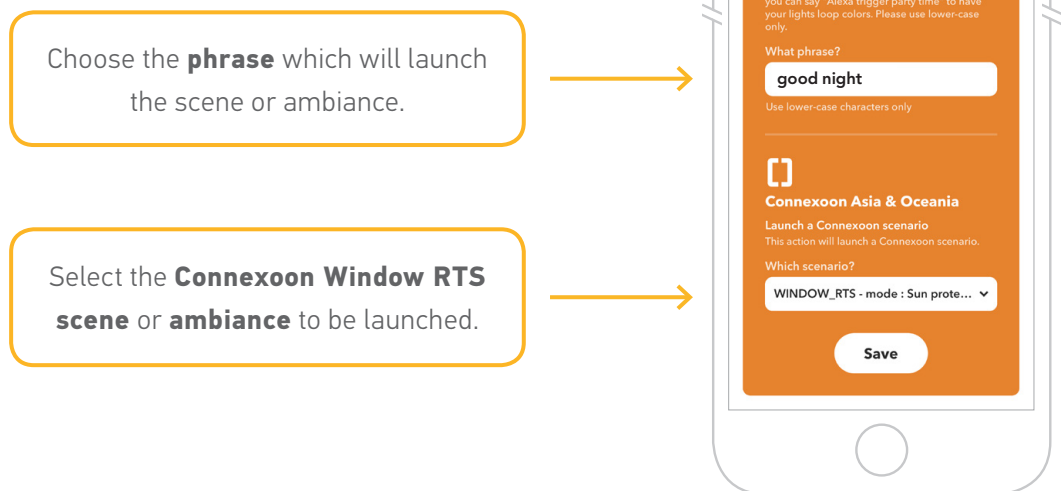
14 Scroll through the list of pre-defined **Applets** to select the one you wish to **activate**.



15 Select **Learn more** on the Applet chosen to see the services used. Then select **Turn on**.

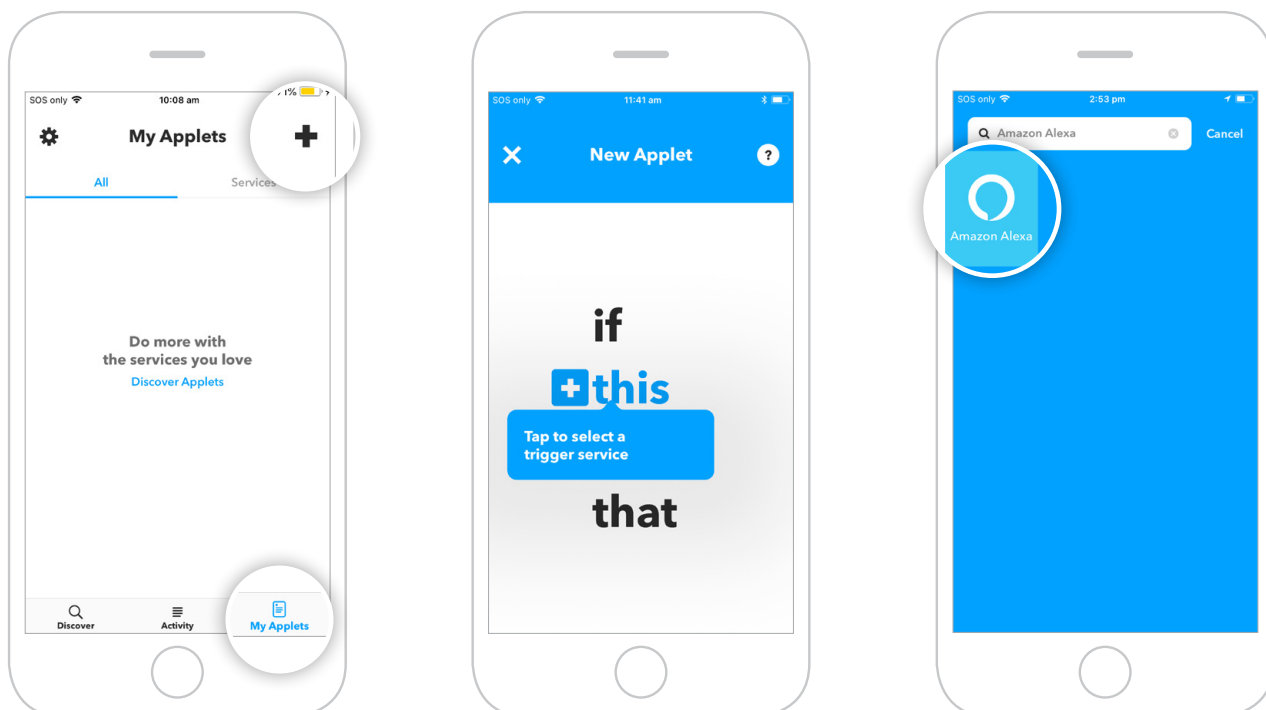


- 16** Enter the details in the Applet and select **Save**.
Your customised Applet has been created.

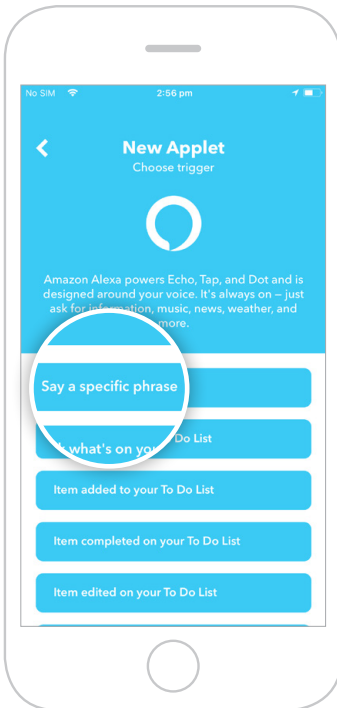


Create a new Applet

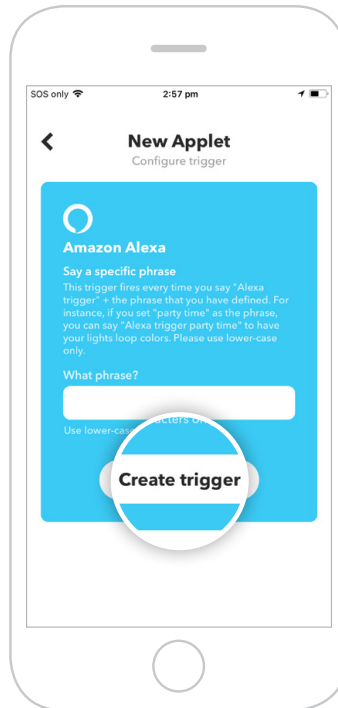
- 17** Open the **My Applets** tab and select **+** in the top right of the page.
- 18** Select **+ this**.
- 19** Search and select **Amazon Alexa**.



20 Select the **style of trigger** to activate the Connexoon Window RTS.



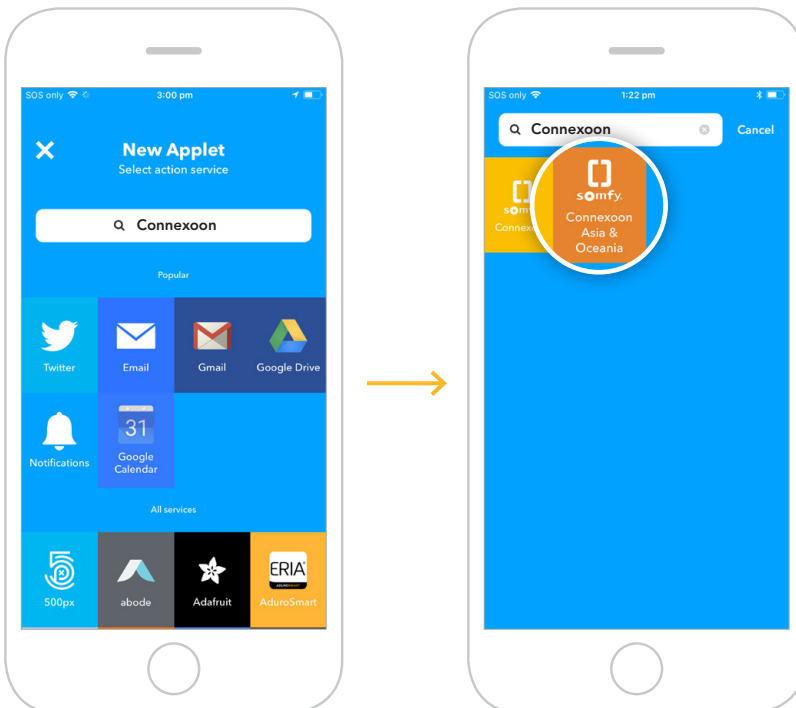
21 Enter the phrase to trigger your Connexoon Window RTS. Select **Create trigger**.



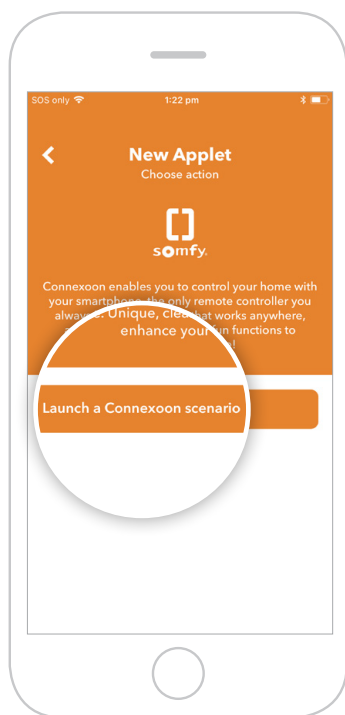
22 Select **+ that**.



23 Search for **"Connexoon"**. Ensure you select **Connexoon Asia & Oceania**.



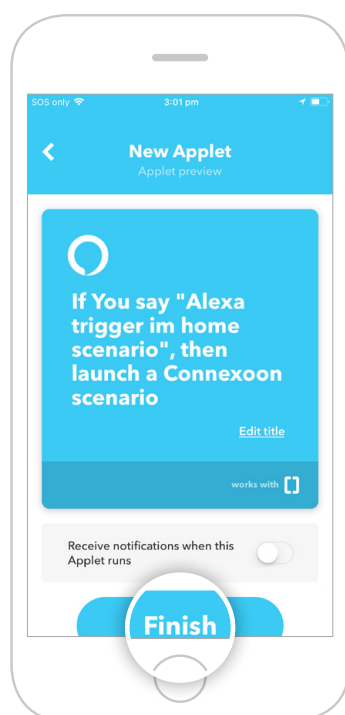
24 Select **Launch a Connexoon scenario**.



25 Select the Scenario you wish to launch from the drop-down menu. Select **Create action**.



26 The Applet has been created, select **Finish** to save.



27 The Applet is saved and can be viewed in **My Applets**.



Somfy Pty Limited

Australia

Toll Free 1800 076 639

t: 02 8845 7200

e: somfy.au@somfy.com

New Zealand

Toll Free 0800 276 639

e: somfy.nz@somfy.com

somfy.com.au

somfy.co.nz



Find us on Facebook



Follow us on Instagram



Subscribe to us on YouTube