

Guarantee Care & Cleaning



Guarantee Care & Cleaning Operation

Timeless style and simplicity
that works for every room
in your home.

Weathermaster®

Welcome
to the
Weathermaster
lifestyle





Thank you for purchasing Weathermaster window coverings. With correct operation and care, your blinds, awnings and shutters will provide years of beauty and performance. Please review this instruction booklet thoroughly for operation, care and warranty information.



Quick Guide

Weathermaster® products are designed to require minimal care and maintenance.

All homes are different with varying levels of care and cleaning required. To ensure your window coverings maintain their appearance to the highest standard, we have put together this simple care and cleaning guide to help you with routine maintenance and additional care recommendations.

If you are ever in doubt or have any questions, please contact the Weathermaster distributor from whom you purchased.

At a glance

The following table is designed to help you select the best method for routine maintenance and deep cleaning of your Weathermaster® products.

Please refer to the following pages of this Care and Cleaning Guide for more detailed advice.

	Dusting	Hand-Held Vacuuming	Compressed Air
Whisper® Shades			
All fabrics except	•	•	•
Elan	•		•
Sheer	•	•	•
Panache	•	•	•
All Blockout Fabrics	•	*	•
Aurora	•	•	•
Pleated Blinds			
All Fabrics	•	•	
Roller Blinds & Sunscreens			
All Fabrics	•	•	
Vertical Blinds			
All Fabrics	•		
Country Woods® Venetians			
All Products	•	•	
Masterwoods® Blinds			
All Products	•		
Aluminium Venetians			
All Products	•	•	
Awnings			
All Products			

* Dry method only

† For wet method, ensure that no chemicals are to be used (water only).

Hair Dryer (Cool Setting)	Spot Cleaning	Bathtub Cleaning /Water Immersion	Ultrasonic Cleaning	Injection/ Extraction Cleaning	Hose down with light detergent
•	•	•	•	•	
•			•	*	
•	•			•	
•	•		•	*	
•	•				
•			•	†	
			•		
	•				
	•				
	*				
	•				
	•				
					•

Whisper[®] Shades



Ultraglide® Operation

For smooth operation, keep the wand close to the fabric when raising and lowering the shade.

To lower the shade:

1. Pull the wand toward the centre of the shade at about a 45° angle. A locking mechanism at the top of the wand releases with a "click." The shade lowers as you allow the wand to return to the vertical position.

IMPORTANT: The wand must be pulled in close to the front of the shade. Do not pull the wand out away from the shade.

2. To stop the shade while lowering, move the wand back toward the vertical position and give a slight downward pull until the locking mechanism engages.

IMPORTANT: If the shade is installed in inside fit or stopping the shade is difficult, angle the wand at 45 degrees towards the control mechanism to re-engage it.

3. If the shade hits an obstruction as it is lowered, it will stop, which may cause the cords in each cord route to become misaligned. This may cause the shade to be angled or tilted when fully raised. If this occurs, do the following:
 - a. Raise the shade slightly.
 - b. Lower the shade completely to the sill. In some cases, pull gently on the bottom rail to get it to drop completely.

IMPORTANT: If the shade is tilted when fully raised, do not pull harder on the wand. It does not correct the tilt and may make it worse.

To raise the shade:

Pull the wand straight down or slightly toward the outside.

- a. With each stroke the shade partially raises.
- b. Allow the wand to retract after each downward stroke.
- c. Use multiple strokes until the shade reaches the desired position.



Day/Night and Top Down/Bottom Up

To operate Day/Night and Top Down/Bottom Up shades, the right wand operates the centre rail and the left wand operates the bottom rail (unless reverse controls were specified on the order).

IMPORTANT: You must first lower the bottom rail before lowering the centre rail. Likewise, you must first raise the centre rail before raising the bottom rail.



Standard Cord Lock Operation

To raise or lower the shade

Keep the cord close to the fabric when operating the shade. Simply disengage the cord lock by moving the cord toward the centre of the shade. Gently pull on the cord to raise the shade. Engage the cord lock by returning the cord to the original position.

Cleaning and Care

Weathermaster® Whisper® Shades are made of anti-static, dust-resistant fabric which repels dirt and dust. For most Whisper® fabrics, the following cleaning options are available.



Routine Maintenance

Dusting

Regular light dusting with a feather duster is all the cleaning needed in most circumstances.

Vacuuming

CAUTION: Do not vacuum Elan fabrics. For deeper cleaning on any other fabrics, vacuum gently with a brush attachment.

Compressed Air/Hair Dryer (Cool Setting)

Use compressed air or a hair dryer on a cool setting, to clean the inner cells and front face of the fabric by blowing dust and dirt off.

Spot-Cleaning

CAUTION: Do not spot clean Elan and Aurora fabrics.

1. Prepare a solution of warm water and a mild detergent.
2. Dampen a clean cloth in the solution and wring it out.
3. Dab the spot with the dampened cloth until it is removed. Do not rub the fabric.
4. Allow the shade to dry in the completely lowered position.



Deep Cleaning

Bathtub Cleaning/Water Immersion

CAUTION: Do not immerse Elan, Panache, Aurora, Sheer and all Blockout fabrics.

- Prepare a solution of warm water and a mild detergent.
- Immerse the shade in a basin or bathtub filled with warm water and a mild detergent.

IMPORTANT: Never immerse the headrail into the solution.

- Rinse with clean water.
- Before removing from the rinse water, fully raise the shade and tilt it to allow excess water to drain off.
- Dry the shade completely in the lowered position.

CAUTION: Check the chart to see if your fabric is suitable for water immersion.



Ultrasonic Cleaning

CAUTION: Do not ultrasonically clean Sheer and all Blockout fabrics.

- Some Whisper® fabrics can be ultrasonically cleaned by a professional. (Please refer to page 7).
- Specify that a mild detergent solution is used.

IMPORTANT: Never immerse the headrail into the solution.

- Dry the shade completely in the lowered position.

Injection/Extraction Cleaning

This type of professional cleaning injects a cleaning solution into the fabric and extracts the dirty solution in the same motion. Contact your Weathermaster® store of purchase to find out if this is available in your area.

- Use only the dry method of injection/extraction for Elan fabrics.
- If using injection/extraction for Aurora fabrics, specify that no chemicals are used (water only).

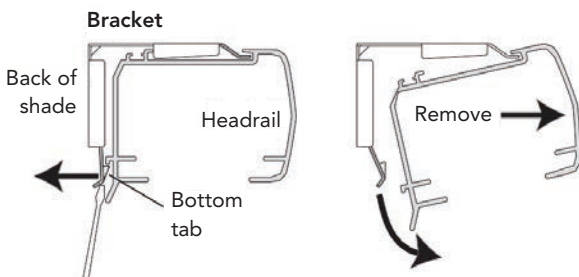
Headrail Cleaning

CAUTION: Never use abrasive cleaning methods or harsh chemicals.

- Dampen a soft, clean cloth in warm water and wring it out.
- Gently wipe the headrail to remove dirt and dust.

Removing Shades (if Necessary)

- Lower the shade approximately 100mm.
- While holding the headrail, push back on the bottom tab of the installation bracket with a flat head screwdriver to release the bottom of the headrail.
- Then roll the back of the headrail down and out from the bracket.



Pleated Blinds







Day/Night and Top Down/Bottom Up

To operate Day/Night and Top Down/Bottom Up shades, the right wand operates the centre rail and the left wand operates the bottom rail (unless reverse controls were specified on the order).

IMPORTANT: You must first lower the bottom rail before lowering the centre rail. Likewise, you must first raise the centre rail before raising the bottom rail.



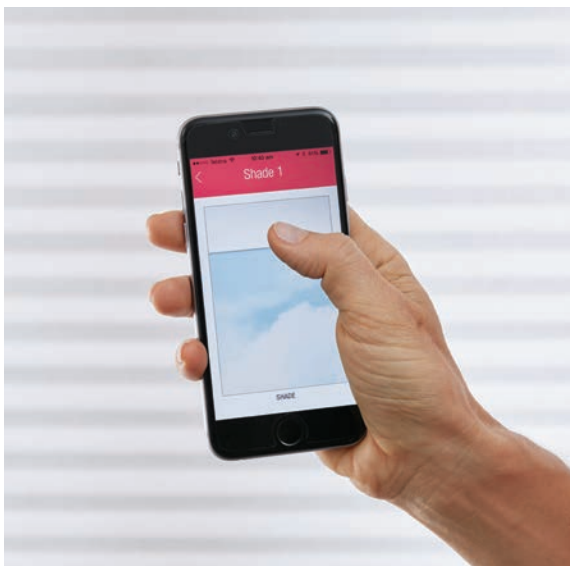
Standard Cord Lock Operation

To raise or lower the shade

Keep the cord close to the fabric when operating the shade. Simply disengage the cord lock by moving the cord toward the centre of the shade. Gently pull on the cord to raise the shade. Engage the cord lock by returning the cord to the original position.

Cleaning and Care

Little is required to keep Pleated Blinds clean, as they are anti-static, meaning the product resists airborne dust.



Motorised Operation

For motorisation information, please refer to the SOMFY®, Qmotion® or PowerView® product brochure that is supplied with your blinds.

Routine Maintenance

Periodic cleaning is recommended to help keep the blinds looking like new.

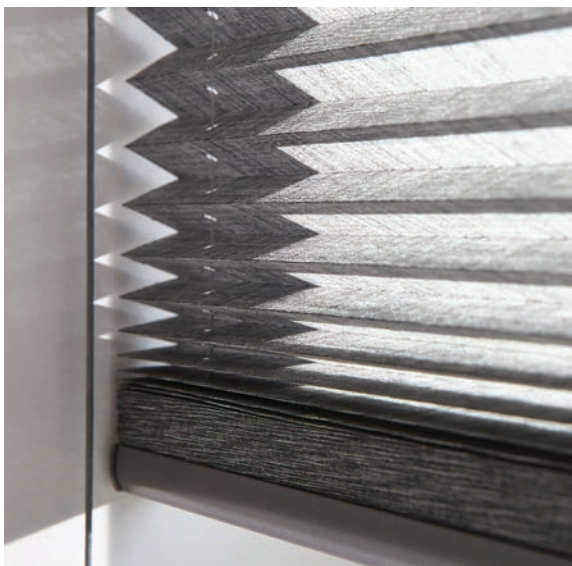
Dusting

If dusting is required, use a soft brush or dusting cloth.

Deep Cleaning

Dirt marks or spills on the fabric must be cleaned ultrasonically. Think of this process the same as taking your silks to the dry cleaners.

If the fabric in your blinds has a metallised backing:
DO NOT spray window cleaner on or near the fabric.



Roller Blinds & Sunscreens



Operation

Standard Chain Operation

To lower the blind:

- Pull the back of the cord loop to lower the blind.
- Pull until the blind is at the desired height.

To raise the blind:

- Pull the front of the cord loop to raise the blind.
- Pull until the blind is at the desired height.



Cleaning and Care

Combining high-quality textiles with innovative operating systems for easy maintenance, Weathermaster Roller Blind fabrics treated with Sanitized® protective anti-static coating, make the fabric less susceptible to dirt and dust build-up than normal cloth. However, it is recommended that any stains should be removed without delay.



Motorised Operation

For motorisation information, please refer to the SOMFY®, Qmotion® or PowerView® product brochure that is supplied with your blinds.

Routine Maintenance

Periodic cleaning is recommended to help keep the blinds looking like new.

Dusting

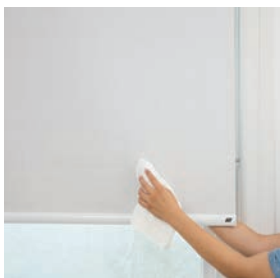
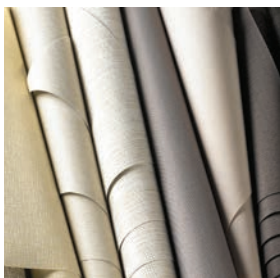
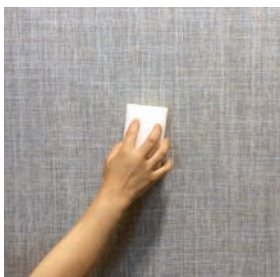
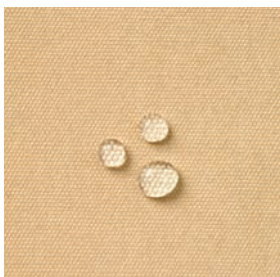
Surface dust may be removed with a gentle brush, feather duster or clean dry cloth.

Spot Cleaning

It is recommended that stains and spills are attended to promptly. Simply wipe the fabric with a sponge and lukewarm water. If marks are still visible, add a little mild detergent then gently dry with a clean cloth. For removal of dirt and grime, an art gum rubber is excellent for cleaning small marks.

Weathermaster Roller Blind fabrics treated with DURAGUARD® Fabric Protector and/or Sanitized® Antimicrobial Protection, help resist liquid stains and protect against the development of mildew and bacteria.

(Refer website for list of fabrics that are treated with Duraguard® and Sanitized® coatings.)



Vertical Blinds





Operation

Chain and Cord operation

To open the blades, pull the chain until the blades are in the desired position. To pull the blades to one end, pull the cord until all blades are stacked together.



Traversing Wand operation

To open or close the blind, turn the wand until the slats are tilted to the desired position. To traverse the blind, pull the wand until the slats are stacked to the desired position.



Cleaning and Care

Combining high-quality textiles with innovative operating systems for easy maintenance, Weathermaster Vertical Blind fabrics are treated with a protective anti-static coating, making the fabric less susceptible to dirt and dust build-up than normal cloth. However, it is recommended that any stains should be removed without delay.



Routine Maintenance

Periodic cleaning is recommended to help keep the blinds looking like new.

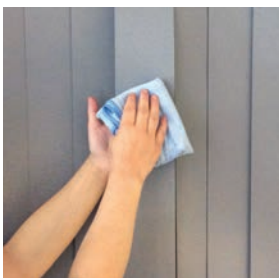
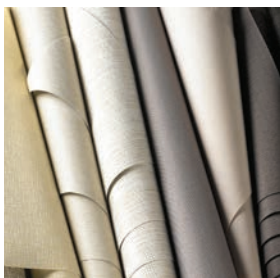
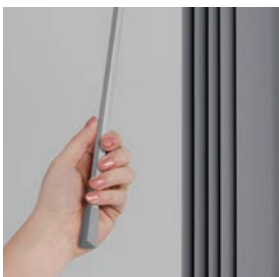
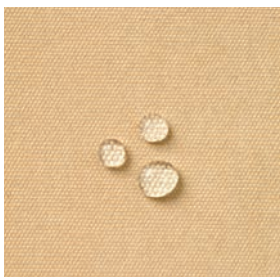
Dusting

Surface dust may be removed with a gentle brush, feather duster or clean dry cloth.

Spot Cleaning

It is recommended that stains and spills are attended to promptly. Simply wipe the fabric with a sponge and lukewarm water. If marks are still visible, add a little mild detergent then gently dry with a clean cloth. For removal of dirt and grime, an art gum rubber is excellent for cleaning small marks.

Weathermaster Vertical fabrics treated with DURAGUARD® Fabric Protector and/or Sanitized® Antimicrobial Protection, help resist liquid stains and protect against the development of mildew and bacteria. (Refer website for list of fabrics that are treated with Duraguard® and Sanitized® coatings.)



Country Woods® Timber Venetians



Operation

Manual Cord Lock Operation

To tilt the slats:

Pull on one of the single cords to tilt the slats in one direction, and pull on the other cord to tilt the slats in the opposite direction.

To raise and lower the blinds:

Raise and lower the shade manually and lock in place with the cord lock. Wind excess cord around the cleats.

The cord lock has a locking device that holds the cords in place when they hang vertically down. To raise or lower the blind, pull the double cords towards the middle until you hear the cord lock disengage. When the blind is at the desired height, return the cord to the side of the blind to re-engage the cord lock.

IMPORTANT: When raising or lowering the blind, the slats should be in the open position.

Motorised operation

For motorisation information, please refer to SOMFY® or PowerView® product brochure that is supplied with your blinds.

Cleaning and Care

Country Woods® Venetians are made of quality timber and require minimal regular cleaning.

Routine Maintenance

Dusting

Dust can be easily brushed off using a clean dry cloth, a feather duster or a vacuum cleaner with a brush attachment. To dust or vacuum, tilt the louvre up and then down, (but not entirely closed) to reach the entire top and bottom surface of the louvres.

Spot Cleaning

- Dirty louvres can be cleaned with a damp cloth.
- Chemical based cleaning products are not recommended.
- Do not allow a lot of water to come into contact with the timber. Although the timber is coated, water can cause the louvres to warp, bow or twist, stains to occur or the paint/lacquer to peel. Do not use a damp cloth when cleaning. Damage caused by water is not covered under warranty.
- Weathermaster® Country Woods® Collection shutters and blinds are a natural product and over time will age from the effects of the sun.

Handy Tip

When cleaning any window, spray glass cleaner on a cloth rather than spraying directly on the window. This will prevent damage to the wood finish by splattering the cleaning solution.





Masterwoods® Venetians

Operation

Manual Cord Lock Operation

To tilt the slats:

Pull on one of the single cords to tilt the slats in one direction, and pull on the other cord to tilt the slats in the opposite direction.

To raise and lower the blinds:

Fully open the slats and pull the double cord towards the middle of the blind, out at approx 45° and slightly down. When the blind is at the desired height, return the cord to the side of the blind to engage the cord lock.

IMPORTANT: When raising or lowering the blind, the slats should be in the open position.

Motorised operation

For motorisation information, please refer to the SOMFY® or PowerView® product brochure that is supplied with your blinds.

Cleaning and Care

Masterwoods® Venetian blinds combine the look of real wood with the quality and durability of advanced technology that is resistant to discolouration and warping.

Routine Maintenance

- Dust can be easily brushed off using a clean dry cloth, a feather duster or a vacuum cleaner with a brush attachment.
- To remove stains, simply wipe with a sponge and lukewarm water.

IMPORTANT: Do not immerse the headrail in water.





Aluminium Venetians

Operation

Cord and Wand Operation

To tilt the slats:

Simply rotate the wand to tilt the slats from fully closed to any desired angle.

To lower the blind:

Tilt the slats to the open position. To lower, simply pull the cord towards the centre of the blind and lower gently.

To raise the blind:

To raise, tilt the slats to the fully opened position. Remove the bottom rail from the hold-down brackets (if fitted). Pull the lift cord towards the centre and raise the blind. To lock in position simply move the cord towards the outer edge of the blind to engage the cord lock.

Cleaning and Care

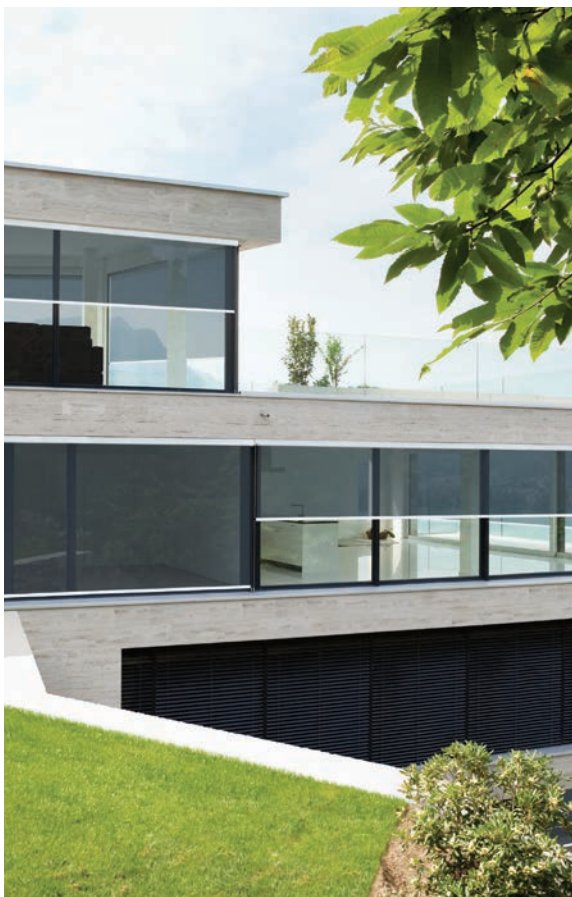
Aluminium Venetians are made from a durable and flexible 'bounceback' aluminium that is resistant to abrasion, peeling, scratching, dulling and discolouration.

Routine Maintenance

- Dust can be easily brushed off at regular intervals using a clean soft cloth, a feather duster (recommended) or by using a vacuum cleaner with a brush attachment. To dust, tilt the slats up and then down (but not entirely closed) to reach the entire surfaces.
- To vacuum, use the brush attachment and tilt slats as above.
- Slats may be wiped over with warm water and a mild detergent.

Deep Cleaning

You can also have your blinds cleaned by a professional cleaning service which uses ultrasonic cleaning technology.



Alpha External Screens

Operation

Manual Crank Operation

To operate down:

1. Place crank handle onto the ring of the gearbox.
2. Wind crank handle in a clockwise direction, the awning will roll out and down to the desired drop.
3. Remove crank handle and store in a safe place.

Locking bolts

Slide the locking bolt handle to secure the awning in the down or preset position and lock into place.

To operate up:

1. When ordered with hold down option: unclip snaphooks from the saddles. Ensure not to roll product up when hold down clips are attached to breeching staple.
2. Wind crank handle in an anti-clockwise direction until the bottom rail rests against the headbox.
3. To avoid getting hurt from the suspended crank handle, remove crank handle and store in a safe place.

NOTE: To protect your awning from damage, please retract it in windy situations.





Spring Operation

To lower and raise the awning:

Simply push up using the bottom rail/handle to raise the awning and pull down on the bottom rail/handle to lower the awning.

Motorised Operation

For motorisation information, please refer to the SOMFY®, Photon One Solar Motor or PowerView® product brochure that is supplied with your awning.

Cleaning and Care

Weathermaster® Smart Shade and Canvas fabrics have been manufactured from the highest quality materials and will give many years of outstanding service if cared for appropriately.

Routine Maintenance

- Always ensure any electrical connections to the awning are isolated prior to any cleaning.
- **The hardware of the awning is low maintenance. Wipe down with a damp cloth as necessary to remove any dirt or dust.**
- Avoid rolling up the fabric awning when wet. Roll up style awning should be retracted in rain or storm conditions. If rolled up wet, the awning should be extended and allowed to dry once the weather clears. Failure to take this action will encourage algae, mildew or other fungal growth, that will not be covered under your product warranty.
- Avoid pools of water laying on the fabric or leaving the awning extended in the rain, as failure to do so will accelerate some leaching of chemicals, reducing mould and mildew resistance.
- Do not allow dirt, dust, grime, leaf litter and bird matter to remain on the fabric (as this provides a perfect medium for bacteria to proliferate). Cleaning should be carried out by light sponging with warm water and a mild natural soap. Rinse thoroughly to remove soap. Do not scrub the fabric. **Hosing the fabric occasionally on a hot day is also beneficial to the appearance of the fabric as it removes dust and grime and minimises the development of algae, mildew or other fungal growth. Do not use soap powder, concentrated soaps or detergents, nor cleaning fluids. Keep insecticides, solvents and fuels away from the awning.**
- Occasionally extend the awning fully down to even out the material, particularly if the awning is usually set in one position.



Kona Folding Arm Awnings

Manual Crank Operation

To extend out:

1. Place crank handle into the ring of the gearbox.



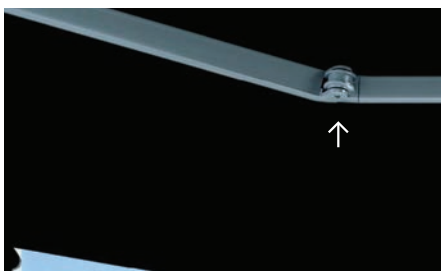
2. Wind handle clockwise and allow awning to extend to the desired projection.



3. If the arms are fully extended and you continue to wind, the fabric will sag.

NOTE: Never extend the awning to expose the roller tube.

4. Rewind until the fabric is taut. There should be approximately a 5mm gap at the elbow of the arm.



To retract in:

1. Place crank handle into the ring of the gearbox.
2. Wind handle in an anti-clockwise direction until the awning is completely closed.
3. When retracting the awning, ensure the fabric always rolls over the top of the roller.



4. To avoid getting hurt from a suspended crank handle, remove crank handle and store in a safe place.

Motorised Operation

For motorisation information, please refer to the SOMFY® product brochure that is supplied with your awning.

Cleaning and Care

- Should mildew spots develop on the fabric, there are numerous products available at outdoor/camping stores that can be used. Mildew removers are primarily bleach-based and manufacturer's instructions must be followed. In applying these products the following general tips are given:
 - a. Treat the awning in situ i.e. as it sits fully rolled down.
 - b. Apply the solution to the fabric liberally (using a sponge mop is ideal). Care should be taken to protect gardens from the solution run off, which will kill plants it comes in contact with.
 - c. A second application of mildew remover may be applied if desired. However, obstinate mildew stains may remain.
 - d. ALWAYS follow steps (a), (b) and (c) with a water proofing application.
- Awnings exposed to coastal environments and salt spray should be washed down regularly. Salt build up can be very corrosive and salt damage is not covered in your warranty.



Proximity	Cleaning Frequency
Direct beach front	Weekly
1km radius	Monthly
10km radius	Quarterly

Guarantee

New Zealand Window Shades Limited guarantees that WEATHERMASTER blinds which are installed in accordance with the manufacturer's directions, will be free from defects in materials and workmanship for a period of 5 years for products purchased from a WEATHERMASTER store from the date of installation. However, in the case of commercial customers, the guarantee shall be a period of twelve months from the date of installation.

The obligation of New Zealand Window Shades Limited under this guarantee is limited to repair or replacement of the blinds or components deemed to be defective. New Zealand Window Shades Limited shall, in its sole discretion, determine whether repair or replacement is appropriate.

This guarantee does not cover defects or damage caused by accidents, alterations, misuse, abuse, negligence, automated devices, fair wear and tear or failure to follow the instructions of New Zealand Window Shades Limited or the manufacturer as appropriate, with respect to cleaning or maintenance.

The foregoing sets out the extent of this guarantee. New Zealand Window Shades Limited shall not otherwise be liable or responsible for any direct, indirect, incidental or consequential damage, costs or losses of any kind arising out of or in connection with the blinds or components or for any delay by New Zealand Window Shades Limited or the manufacturer in undertaking repairs or replacement under this guarantee.

Except as expressly provided herein, all other warranties, representations, conditions, undertakings, rights, duties or liabilities, whether arising by implication of law or otherwise, are hereby expressly excluded.

The information and advice included in this brochure has been prepared with care. However, we are unable to accept responsibility for the results of any damage caused during operation.

As with all textiles, Weathermaster® fabrics are subject to some variations. Slight wrinkling, puckering or bowing is inherent in textile products and should be considered normal, acceptable quality. Precautions should be taken to reduce exposure to harsh environmental elements, such as salt air. Continuous exposure to the elements will accelerate the fabric deterioration. Additionally, there will be slight differences in pattern alignment from the fabric on the rails to the fabric of the blind, which do not detract from the product's appeal. Variations in colour and/or pattern irregularities are unique characteristics that contribute to the classic beauty of a blind.

Qmotion® is a registered trademark of Qmotion Incorporated. Somfy® is a registered trademark of Somfy SAS. © Copyright 2019 Hunter Douglas [ABN 98 009 675 709]. ® Registered Trade Marks of Hunter Douglas. 18.017.025 C14375_08.2017



**Call 0800 10 27 10 for a free consultation
or visit weathermaster.co.nz**

Blinds | Awnings | Shutters | Umbrellas