

# Ultraweave

**5% openness**

**Ultraweave Sunscreen**

## Features

The 2 x 2 basketweave construction of Ultraweave provides great stability and excellent vision out whilst controlling light, glare and heat. Colours are available in 5% and 10% openness, providing a level of day time privacy without compromising your view.

## Care Instructions

Dusting with a feather duster is all that is required to keep your fabric looking good. Dirt and grime can be removed by simply wiping fabric skins with a sponge soaked in lukewarm water. If marks are still visible, add a little detergent. Then dry gently with a clean cloth.

## Colour Options



Cumberland

Midnight

Thunder  
Grey

Gravity

Pewter



Swiss

Whisper

White



Fire retardant  
AS1530 part 2

**Weathermaster**

# Ultraweave 5% openness Sunscreen

## Technical information

Fabric Density	Semi Transparent
Composition	32% Fibreglass, 68% PVC
Weight	410 gsm $\pm$ 20
Thickness	0.42mm (approx.)
Width	2500m and 3000mm width, dependent on colour
Colour Fastness	6-7 (AS 2001.4.21)
Flame Retardancy	Independently tested to AS1530 part 2. Flammability Index: 4 Range [0-20]
Weave	2 x 2 Basketweave
Organic emissions (VOC)	Does not exceed the maximum VOC (Volatile Organic Compound) criteria specified by the Green Building Council of Australia (IEQ-11).
Product Options	Roller Blinds

Fabric colour	Midnight	Thunder Grey	White
Optical/Light properties			
Visual Light Transmittance	9%	7%	19%
Openness factor (nominal)	6%	6%	6%
Heat/Solar properties			
Solar transmittance	8%	7%	25%
Solar reflectance	3%	9%	60%
Solar absorbance	89%	84%	15%
G-value / Solar heat gain coefficient			
Glazing Type - Single 4mm Clear Glass	0.70	0.67	0.35

For more information please contact New Zealand Window Shades on 0800 223 224 or <http://www.weathermaster.co.nz/contact-us>

## Colour options presented with data specifications



New Zealand Window Shades Ltd.

PO Box 12 785, Penrose, Auckland 1642, New Zealand

Weathermaster® is a division of New Zealand Window Shades Ltd.

©Copyright 2021 New Zealand Window Shades Ltd.

February 2021



Flame retardant  
AS/NZS 1530.2

Weathermaster®



# Ultraweave

## 10% openness

### Ultraweave Sunscreen

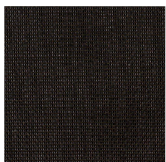
#### Features

The 2 x 2 basketweave construction of Ultraweave provides great stability and excellent vision out whilst controlling light, glare and heat. Colours are available in 5% and 10% openness, providing a level of day time privacy without compromising your view.

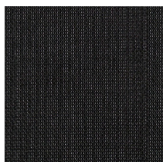
#### Care Instructions

Dusting with a feather duster is all that is required to keep your fabric looking good. Dirt and grime can be removed by simply wiping fabric skins with a sponge soaked in lukewarm water. If marks are still visible, add a little detergent. Then dry gently with a clean cloth.

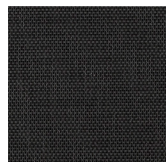
#### Colour Options



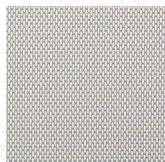
Charcoal  
Cocoa



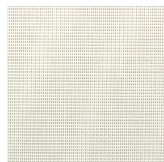
Charcoal  
Charcoal



Charcoal  
Grey



White  
Pearl



White  
White



Fire retardant  
AS1530 part 2

Weathermaster®

# Ultraweave 10% openness Sunscreen

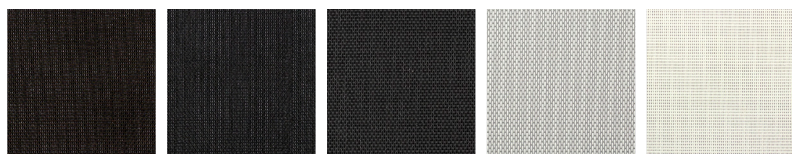
## Technical information

Fabric Density	Semi Transparent
Composition	32% Fibreglass, 68% PVC
Weight	410 gsm $\pm$ 20
Thickness	0.42mm (approx.)
Width	2500m and 3000mm width, dependent on colour
Colour Fastness	6-7 (AS 2001.4.21)
Flame Retardancy	Independently tested to AS1530 part 2. Flammability Index: 4 Range [0-20]
Weave	2 x 2 Basketweave
Organic emissions (VOC)	Does not exceed the maximum VOC (Volatile Organic Compound) criteria specified by the Green Building Council of Australia (IEQ-11).
Product Options	Roller Blinds

Fabric colour	Charcoal Cocoa	Charcoal Charcoal	Charcoal Grey	White Pearl	White White
Optical/Light properties					
Visual Light Transmittance	11%	12%	11%	17%	22%
Openness factor (nominal)	10%	10%	10%	10%	10%
Heat/Solar properties					
Solar transmittance	11%	12%	12%	20%	25%
Solar reflectance	5%	3%	8%	50%	66%
Solar absorbance	84%	85%	80%	30%	9%
G-value / Solar heat gain coefficient					
Glazing Type - Single 4mm Clear Glass	0.70	0.71	0.68	0.45	0.36

For more information please contact New Zealand Window Shades on 0800 223 224 or <http://www.weathermaster.co.nz/contact-us>

## Colour options presented with data specifications



Charcoal  
Cocoa

Charcoal  
Charcoal

Charcoal  
Grey

White  
Pearl

White  
White

New Zealand Window Shades Ltd.

PO Box 12 785, Penrose, Auckland 1642, New Zealand

Weathermaster® is a division of New Zealand Window Shades Ltd.

©Copyright 2021 New Zealand Window Shades Ltd.

June 2021



Flame retardant  
AS/NZS 1530.2

Weathermaster®