

SERENITY™ Cantilever Umbrella



**Fabric
Warranty***
BEST-IN-CLASS



**Frame
Warranty***
BEST-IN-CLASS



Trusted for
over 25 years



Hand built in
New Zealand



Marine
Grade

SERENITY™ Cantilever Umbrella



Rotating cantilever umbrella with single canopy on one mast.

Patented & Trademarked Technology



SHADOWLIFT™
Gas-assisted deployment for an easy lift.



SHADOWGLIDE™
Engineered to open or close in 5 seconds.



SHADOWHUB™
LED light technology built-in and App controlled.



SHADOWLOCK™
Integrated security and wind-protection.

Canopy



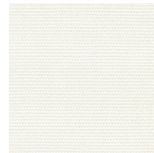
Stock Colours



Oyster



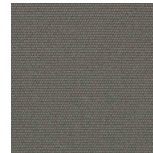
Alpine Stone



Natural



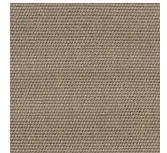
Storm



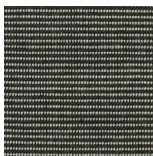
Charcoal



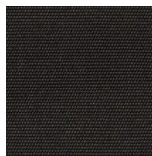
Slate



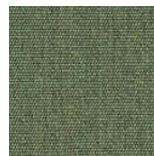
Taupe



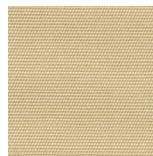
Charcoal Tweed



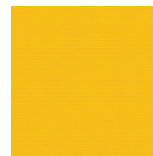
Black



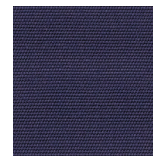
Fern



Linen



Sunflower Yellow



Captain Navy



Terracotta

Special-Order Colours**

RECASENS
BCN 1886

sunbrella®

**Special-Order Colours are non-stock and will incur an additional lead time and surcharge. Full Sunbrella range is available as a custom colour option.



Marine Grade



Solution-dyed, High Colour Fastness



UV and Fade Resistant



UPF 80 UV Protection



Eco-friendly Production



Breathable Weave



Mould and Mildew Resistant



Oil and Stain Repellent



Easy Clean



Water Resistant



Chlorine Resistant



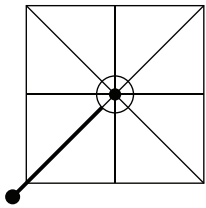
Tear Resistant

Rotating cantilever umbrella with single canopy on one mast.

Size & Configuration

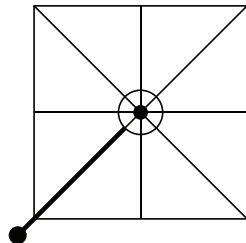
SQUARE

2.5m | 8'



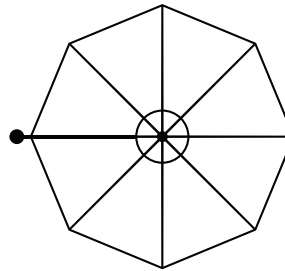
SQUARE

3.0m | 10'



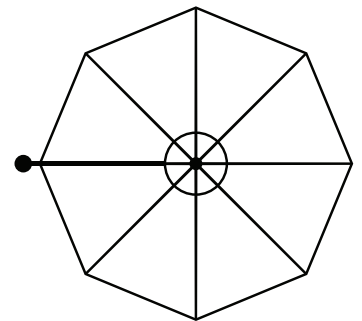
OCTAGON

3.5m | 11'



OCTAGON

4.0m | 13'

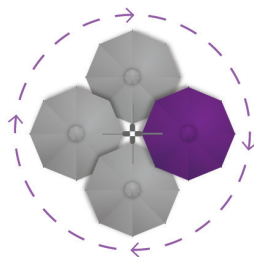


Features



MARINE GRADE

No-rust, 316 Stainless Steel Spigot.



FOLLOW THE SUN

Enjoy the 360° rotation for all-day-shade.

Optional Accessories



LED LIGHT CONTROL

Power your light with the optional Smart Battery or Hardwire Kit.



PROTECTION COVER

Optional care and protection for your umbrella.

Mounting Options

SURFACE PLATE

For deck, patio and concrete mounting. (316 Stainless Steel)



IN-GROUND ANCHOR

For mounting with a concrete footing.



WALL MOUNT BRACKET

For when ground mounting isn't possible. (316 Stainless Steel)



FREE-STANDING BASE + ALUMINIUM BASE COVER*

For complete customised manoeuvrability.



Optional Castor Wheels. N.b. Concrete Pavers are required for ballast (not supplied).



Fabric Warranty*
BEST-IN-CLASS



Frame Warranty*
BEST-IN-CLASS



Trusted for over 25 years



Hand built in New Zealand



Marine Grade