

# CCU10 Commercial Centre Pole Umbrella

Weathermaster®

Heavy Duty Shade.



## Features at a glance

- Commercial grade aluminium frame structure
- Stainless steel hardware for longevity
- Durable high performance hub and fittings
- Telescopic mast enables umbrella to clear most furniture when closing
- Robust 82.5mm diameter mast with 3.4mm wall thickness
- Protection Cover included
- Tough, commercial grade 50 x 25mm strut arm profile

## Accessories



**Rain Gutter**  
Adjoining square umbrellas can be connected with removable rain gutters to increase weatherproof area.

## Canopy

- Marine solution-dyed fabric
- Waterproof Rating: >300mm water column
- Maintenance: All fabrics can be washed and replaced

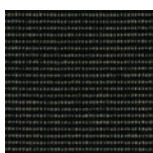
- Weight: 315 g/m2
- Colourfastness: 7-8/8
- Shade Rating: UPF 80 UV Protection

**RECASENS**  
BCN  1886

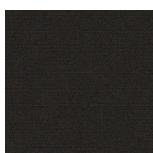
### Stock Colours



Oyster White

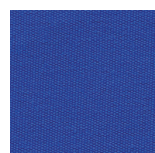


Charcoal Tweed



Black

### Special-Order Colours\*\*



Ocean Blue



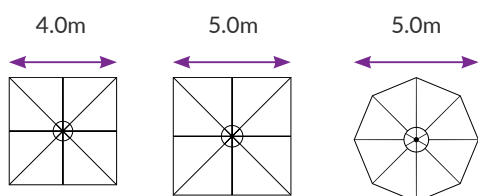
Sunflower Yellow



Logo Red

*\*\*Other Special Order Colours available on request.*

## Size & Configuration



## Mounting Options

### Surface Plate

For deck, patio and concrete mounting.



### In-Ground Anchor

For mounting with a concrete footing.



### Free-Standing Base + Aluminium Base Cover\*

For complete customised manoeuvrability.



*Optional Castor Wheels.  
N.b. Concrete Pavers are required for ballast (not supplied).*

## BEST-IN-CLASS WARRANTY

Relax easy knowing your outdoor umbrella purchase is protected by the industry's best warranty (conditions apply) and customer support.



**Fabric  
Warranty\***



**Frame  
Warranty\***